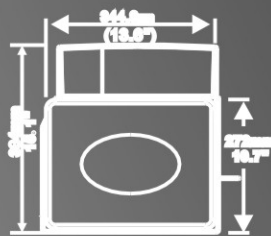
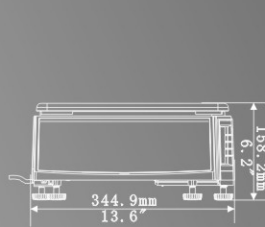


Specification

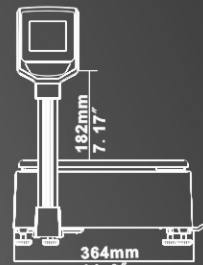
Model Type	LS2N Bench type	LS2C Pole type	LS2R Pole type	LS2S Self-service type	LH15 Hanging scale type
Display	64*132, 5-line LCD (with backlight)	48*122, 4-line LCD (with backlight)	32*264 2-line LCD (with backlight)	32*264 2-line LCD (with backlight)	48*112 LCD 3-line (double-faced)
Direct Keys	112x2 keys		80+32 Images		84*2 keys
Weighing range	6/15kg, 15kg, 15kg/30kg, 30kg				
Division(g)	2/5g 5g 5/10g 10g				
Maximum tare load	-5.998kg -7.4995kg -14.995kg -14.995kg				
Internal Resolution	1/30,000				
Printing Width	56mm 203dot/in				
Label Width	61.5±0.5mm				
Printing Speed	80mm/s				
Printer life	50km				
Clerks	Max 99 Clerks				
Characters per PLU	Max 99 Characters				
Programmable data per PLU	LF code, Tracking code, PLU name, Code, Unit price, Total amount, Price unit, Fresh-keeping days, Tare, Barcodes, Department, Weight, Packing type, Message1, Message2, Label type, Discount mark, Logo and ect.				
Barcode Type	EAN13, EAN18, 2/5 interleaved, Code128.				
Storing Data	label types: 32, PLU: 12000, message 1: 12000, message 2: 12000, text: 1-8				
Paper Type	Label, Continous Thermal Paper, Linerless Label(optional)				
Interface	Ethernet, RS232				
Power Supply	AC 100 ~ 240V; 50 ~ 60Hz				
Operating Temp	0~40, 5%-85%				

Dimensions

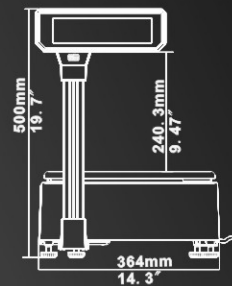
LS2N



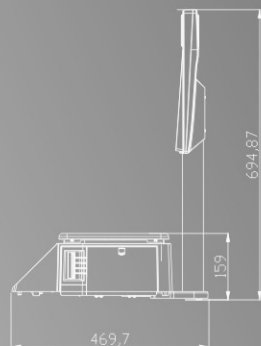
LS2C



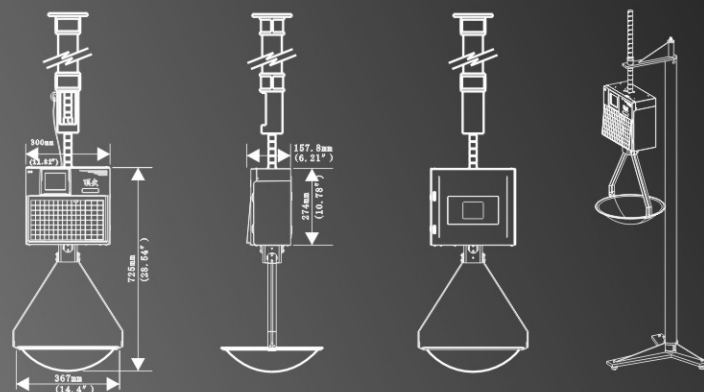
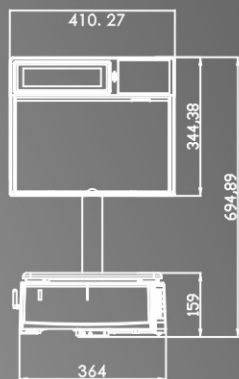
LS2R



LS2S



LH15



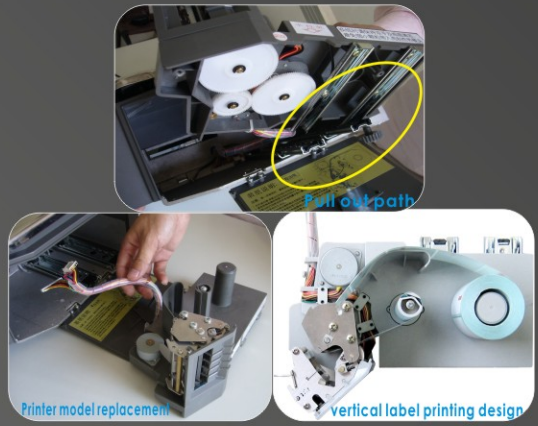
LS2X series



Label Printing Scale



Printer



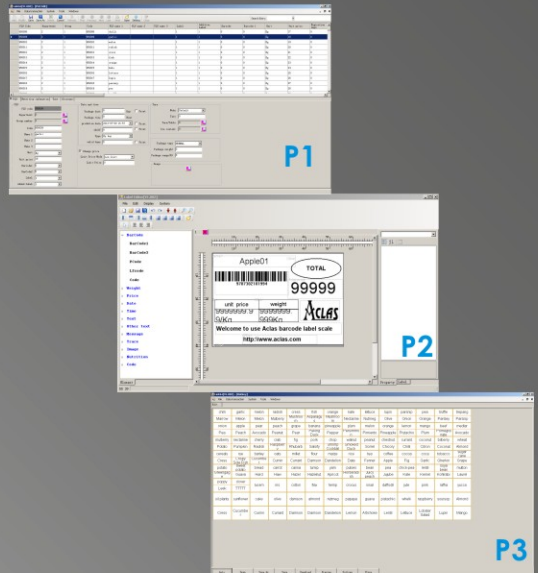
- Modularized printer design makes replacement and maintenance easy and fast.
- Big label roll installment Capacity: Max 1000 pcs labels
- Print density is adjustable as per sensitivity of label paper.
- Auto voltage & temperature compensation design prolongs printer lifetime to 2-3 times.

Patented Hotkey pad



- Flexible hotkey definition, rapid keypad renewal, easy keypad clean, water & dust proof, and convenient operation.
- LSN/C/R: 112*2 keys
- LS2S: 80+32 images
- LH15: 84*2 keys

Powerful SW



- **PLU manager(P1):** Excel type PLU manager makes PLU data edit easy and conveniently.
- **Label editor(P2):** label format design freely, and logo design and download is available.
- **Hotkey editor(P3):** The hotkey is edit via PC sw, keypad renew and replacement is easy and fast.
- **Back office connect:** DLL technical file is offered to connect to POS system of supermarket easily. Scale remote control is realized via parameter and password set and download from back office. Support back office with various back office, such as: XP, Vista, Win7, etc.
- **Others:** Capable of printing batch serial barcode to carry out batch management of fresh commodity purchasing and the fresh status. Various languages support on input, display and print: English, Russian, Arabic, Portuguese and Spanish etc.

Label & PLU Management



- Support vertical and horizontal barcode printout
- Label dimension arrange: 30*30 ~ 56*109mm
- Support 16 font types, BMP graphic print, and tracking & nutritin information.
- Various barcode types support: EAN13, EAN18, 2/5 interleaved, Code128.
- Price of PLU can be inputted temporary by scale keyboard during operation.
- Various weight unit selection is freely, e.g. 10g, 50g, 100g, 500g, kg, lb etc
- PLU lookup via initial letters, easy and fast.

Patent



- **Patented insect-proof design(P1):** prevents the breakdown from bugs, is ideal for fresh and seafood department.
- **Patented anti-rock mechanism(LH15 -P2)**
- **Patented scale height adjusting mechanism(LH15-P3)**

Anti-cheating mechanism



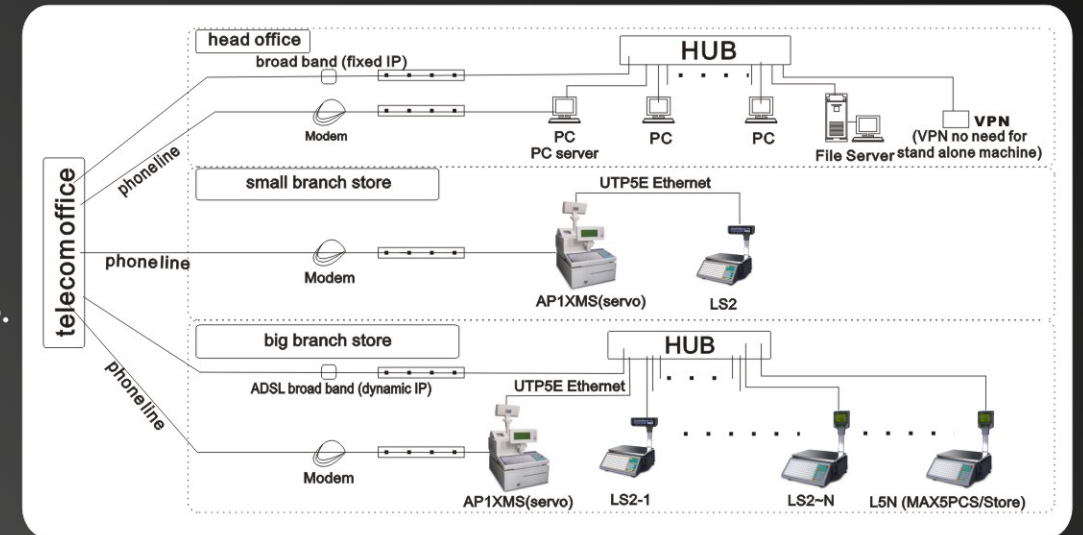
- With secure seal and egg label to prevent from unauthorized access, protects from weighing cheat efficiently.

Wireless WIFI Scale(Optional)



- With optional WIFI module to transmit data via wireless network.

Network system(Pinnacle Exclusive)



Model Range



- Bench type
- 64*132 5-line LCD



- Pole type--Cube display
- 48*122 4-line LCD display



- Pole type--Rectangle display
- 32*264 2-line LCD display



- Self-service type
- 32*264 2-line LCD display



- Hanging scale type
- 48*112 3-line LCD